

# Shoe Dye Form

Name .....

Style number(s) or name(s) and size(s) of shoes to be dyed .....

Receipt number(s) .....

Pick the color you would like the shoes dyed (please circle)



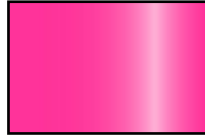
Blush #3



Light Pink #121



Pink #1



Hot Pink #2



Bright Pink #171



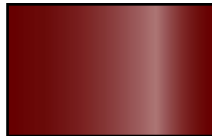
Rose #260



Raspberry #28



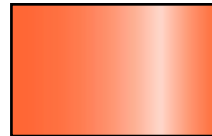
Red #287



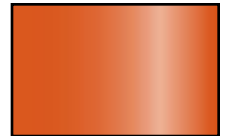
Dark Red #196



Brown #185



Bright Orange #163



Burnt Orange #266



Light Yellow #234



Bright Yellow #204



Warm Yellow #112



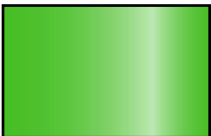
Champagne #141



Celadon #90



Green #209



Lime Green #208



Teal #39



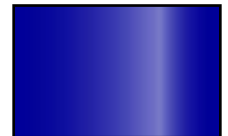
Seafoam #291



Light Blue #139



Robins Egg Blue #176



Royal Blue #43



Navy #184



Lavender #59



Bright Purple #173



Royal Purple #187



Dark Purple #46



Silver #7



Black #10

The cost for standard shoe dyeing is \$23 per pair.

This price includes the dye fee and the shipping cost back to you.

Shoe dyeing is only available for shoes purchased from MyGlassSlipper.com or BridalShoes.com.

PAYMENT:

Use credit card on file from receipt # above

Call me for new credit card #. Phone \_\_\_\_-\_\_\_\_-\_\_\_\_

SHIP TO ADDRESS:

Same as on receipt provided

New address: .....

.....

.....

Please send your shoes to be dyed to My Glass Slipper at 504 Big Bear Blvd., Suite C, in Columbia, MO 65202.

If your order requires extra instructions, write on a separate sheet of paper and attach.

*Getting shoes dyed has some shortcomings that you should be aware of. We don't want you to be disappointed or surprised by how your dyed shoes come out so please take the time to read about the possible issues below. This sheet will need to be signed and sent with the shoe dye form. Example photos are available online at [www.bridal-prom-checkout.com/shoe\\_dye\\_agreement.cfm](http://www.bridal-prom-checkout.com/shoe_dye_agreement.cfm)*

**Dyed shoes are not waterproof.** Shoe dye is made from a water soluble base. This means that if a dyed shoe comes in contact with water, it is likely to run or bleed. The perspiration from your hands or feet might be enough to cause some dye from the shoe to rub off on your skin. It is not likely to rub off onto fabric (your gown) unless that fabric is wet. If you do end up with some color on your skin, it can be easily cleaned off with soap and water or even a cleaning wipe.

**Glue Marks.** During the construction process, the sole of the shoe is glued to the rest of the shoe. Excess glue is wiped away and rest of the glue dries clear. The final product is a visually perfect shoe... until you try to dye it. The small areas at the seams where the glue might have gotten into the fabric will not absorb dye as readily as the rest of the shoes. These areas will appear a lighter shade of the dyed color or maybe even white. These areas are very narrow and not visible by others when the shoes are being worn. They ARE visible if you have the shoe in your hand and are holding it close.

**Dye can appear on the inside of the shoes.** There might be small areas inside the shoe where dye gets on the liner or behind the straps. On occasion, small parts of the sole may also come in contact with shoe dye. These parts are not seen by others and do not affect the performance of the shoe.

**Only exposed areas of the shoes get dyed, not the inside.**

**Dye can be uneven over pleats, gathers, knots, and twists in the fabric.** Areas of the shoe where the fabric is pleated, gathered, tied in a knot, or shaped into a flower or bow might absorb the dye unevenly at the folded edges and creases.

**Scuffs and fabric flaws.** Satin shoes that appear perfect before being dyed might show scuffs or minor fabric flaws once dyed. These areas might appear darker, lighter, shinier, or less shiny than the rest of the shoe. These areas tend to be small and aren't noticeable when being worn. We tried to take pictures of fabric scuffs, but they won't show in the pictures, so we can pretty much guarantee they won't show in your pictures either!

**Dye can't go everywhere.** We try as much as possible to dye the parts of the shoe that are under a bow, flower, brooch, or other type of decoration. You might find that if you look under a bow or flower, the dyeing is not complete. Of course, these areas are never visible to others.

**Leather cannot be dyed.** Occasionally, shoes have a piece of leather reinforcement on the strap where the buckle holes are. Leather does not accept the dye as well as the satin and will appear a lighter shade of the dyed color.

**Different fabrics dye differently.** A color can vary between different shoe fabrics. For example, if you dye both a silk shoe and a satin shoe royal blue, the silk shoe will dye a lighter shade of royal blue.

**To see example photos online, please visit:**

[http://www.bridal-prom-checkout.com/shoe\\_dye\\_agreement.cfm](http://www.bridal-prom-checkout.com/shoe_dye_agreement.cfm)

**I have read the information above and understand the possible risks involved with dyeing shoes.**

---

(name)

---

(date)